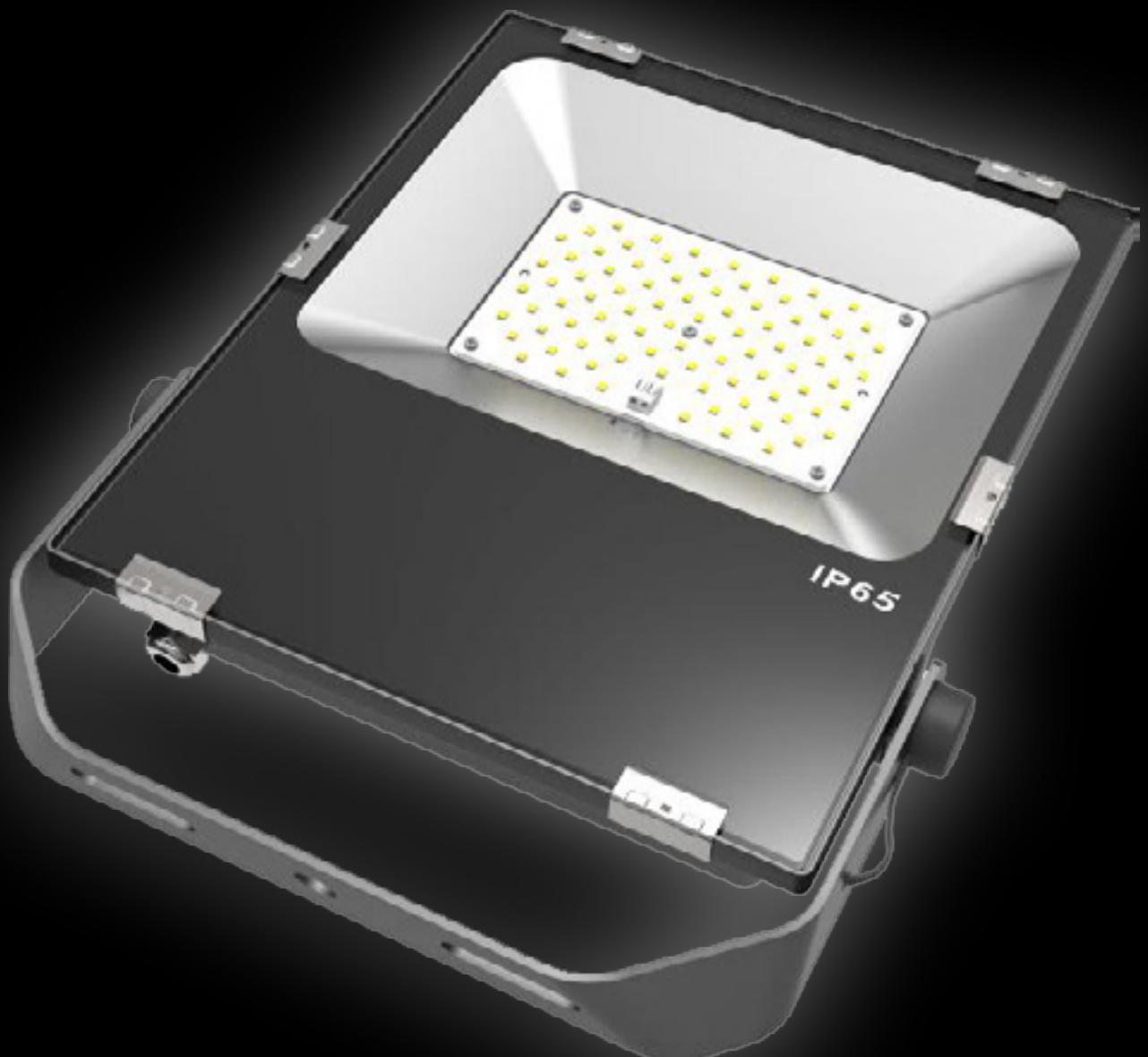


LED.CO.UK

REGUS RANGE



ABOUT US

LED.CO.UK is an International supplier of LED lighting technology. We specialise in complete energy efficient lighting solutions for both new and retrofit applications. We provide the highest quality LED based products by integrating premium components to ensure reliability and optimum performance.

Our service delivers a full bespoke package from site surveys, lighting design, the provision of leading edge technology and installation.

REGUS LIGHTING

At LED.CO.UK we provide a comprehensive range of lighting options for all your commercial applications each tailored to meet the operating and design parameters required.

Lighting design services are available to ensure designs meet BS EN 12464-1:2011, and Society of Light and Lighting: Code for Lighting 2012. We can also provide a cost of ownership analysis to illustrate savings which can be made versus conventional lighting.

From first point of contact to final sign off we aim to support our customers through the complete process so all details are fully dealt with to maximise performance. Within this brochure we have included a small selection of our fast moving product ranges used in warehouse lighting. To view our full range of LED products please visit www.led.co.uk.

REGUS 10W

- Osram LED engine
- IP65 rated
- Aluminium body
- Environmentally Friendly - No mercury or lead enters the environment
- No RF and electronic magnetic interference
- Over 50,000 hours life span
- Beam Angle 120°



The Regus 10W is constructed from an aluminium moulding with the LED chips displayed in a standard array pattern. This creates optimum passive heatsinking as air travels over the fins on the heatsink.

The Regus has an IP65 rating.



Regus 10 W

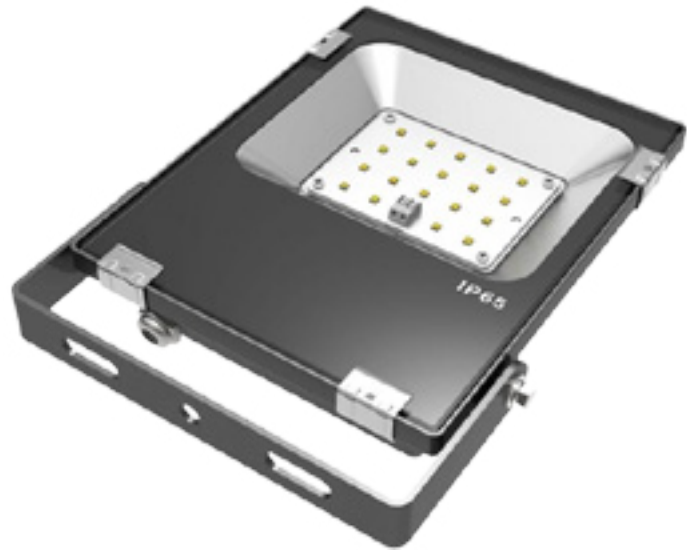
Power	10 W
Dimensions	116 x 166 x 32mm
Weight	0.6 kg
Installation	Bracket mounted
Voltage	85-277Vac 50/60Hz

Performance

Exit Lumens (lm)	1,302 lm
Efficiency	105.9 lm/cW
Colour Rendering	Ra>80
Colour Temperature	3000K / 4000K / 5000K
IP Rating	IP65
Operating Temp.	-20°C - 60°C
Longevity	50,000 hours
Warranty	5 Years

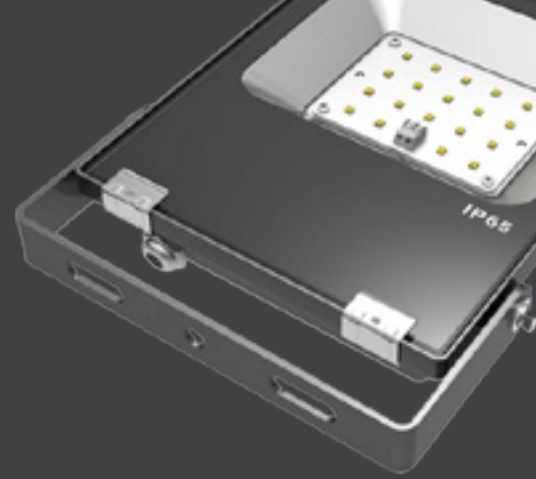
REGUS 20W

- Osram LED engine
- IP65 rated
- Aluminium body
- Environmentally Friendly - No mercury or lead enters the environment
- No RF and electronic magnetic interference
- Over 50,000 hours life span
- Beam Angle 120°



The Regus 20W is constructed from an aluminium moulding with the LED chips displayed in a standard array pattern. This creates optimum passive heatsinking as air travels over the fins on the heatsink.

The Regus has an IP65 rating.



Regus 20 W

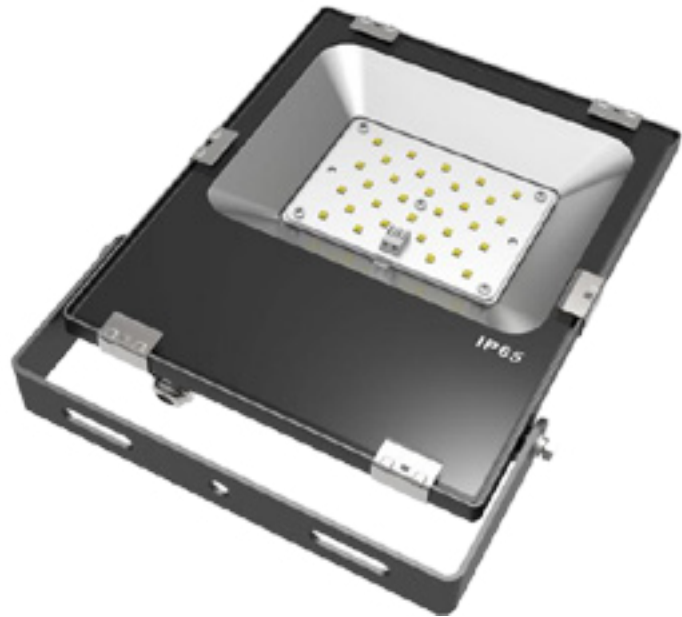
Power	20 W
Dimensions	167 x 266.5 x 40mm
Weight	1.0 kg
Installation	Bracket mounted
Voltage	85-277Vac 50/60Hz

Performance

Exit Lumens (lm)	2,615 lm
Efficiency	125.7 lm/cW
Colour Rendering	Ra>80
Colour Temperature	3000K / 4000K / 5000K
IP Rating	IP65
Operating Temp.	-20°C - 60°C
Longevity	50,000 hours
Warranty	5 Years

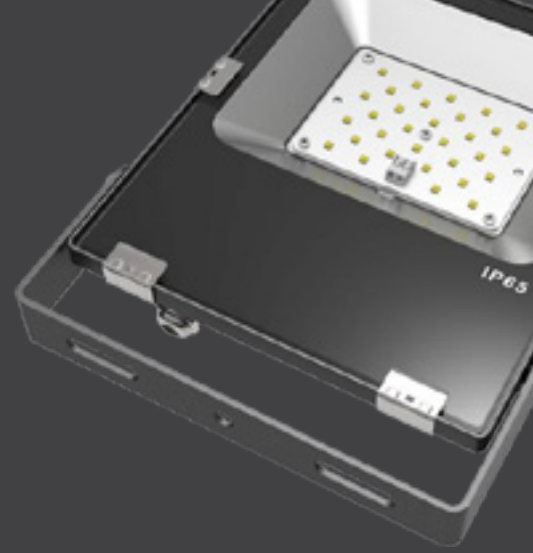
REGUS 30W

- Osram LED engine
- IP65 rated
- Aluminium body
- Environmentally Friendly - No mercury or lead enters the environment
- No RF and electronic magnetic interference
- Over 50,000 hours life span
- Beam Angle 120°



The Regus 30W is constructed from an aluminium moulding with the LED chips displayed in a standard array pattern. This creates optimum passive heatsinking as air travels over the fins on the heatsink.

The Regus has an IP65 rating.



Regus 30 W

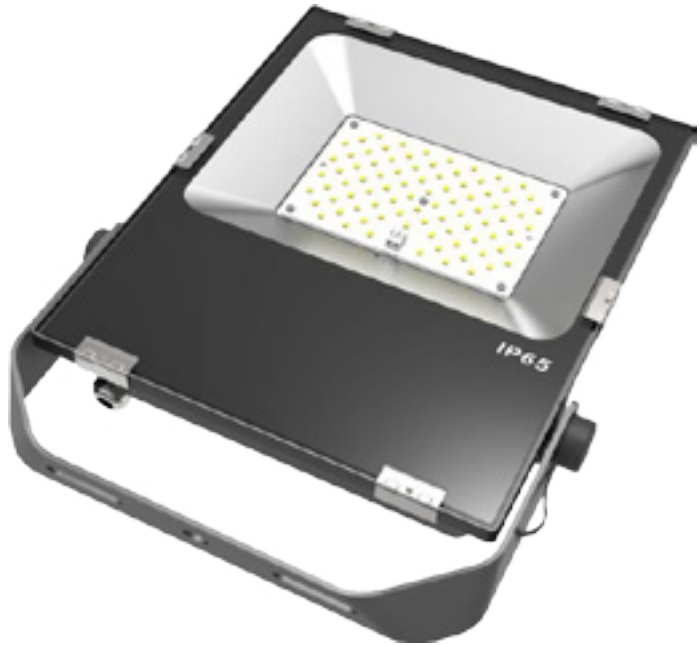
Power	30 W
Dimensions	167 x 266.5 x 40mm
Weight	1.8 kg
Installation	Bracket mounted
Voltage	85-277Vac 50/60Hz

Performance

Exit Lumens (lm)	3,913 lm
Efficiency	126.2 lm/cW
Colour Rendering	Ra>80
Colour Temperature	3000K / 4000K / 5000K
IP Rating	IP65
Operating Temp.	-20°C - 60°C
Longevity	50,000 hours
Warranty	5 Years

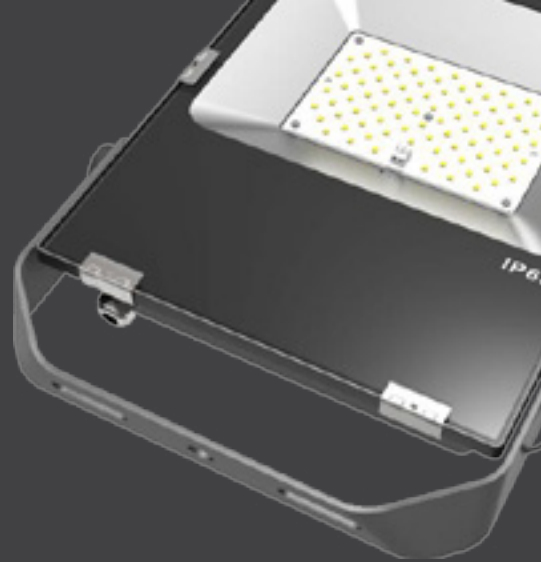
REGUS 50W

- Osram LED engine
- IP65 rated
- Aluminium body
- Environmentally Friendly - No mercury or lead enters the environment
- No RF and electronic magnetic interference
- Over 50,000 hours life span
- Beam Angle 120°



The Regus 50W is constructed from an aluminium moulding with the LED chips displayed in a standard array pattern. This creates optimum passive heatsinking as air travels over the fins on the heatsink.

The Regus has an IP65 rating.

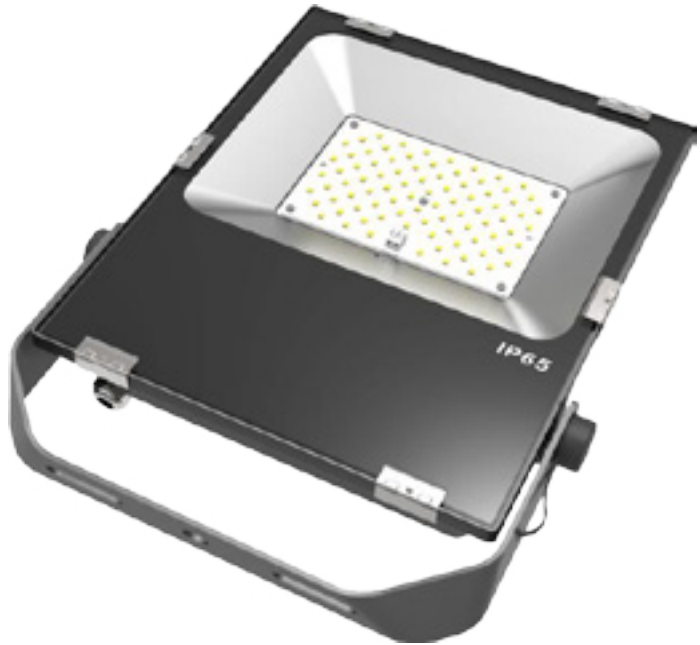


Regus 50 W	
Power	50 W
Dimensions	220 x 310.5 x 50mm
Weight	2.5 kg
Installation	Bracket mounted
Voltage	85-277Vac 50/60Hz

Performance	
Exit Lumens (lm)	6,504 lm
Efficiency	122.9 lm/cW
Colour Rendering	Ra>80
Colour Temperature	3000K / 4000K / 5000K
IP Rating	IP65
Operating Temp.	-20°C - 60°C
Longevity	50,000 hours
Warranty	5 Years

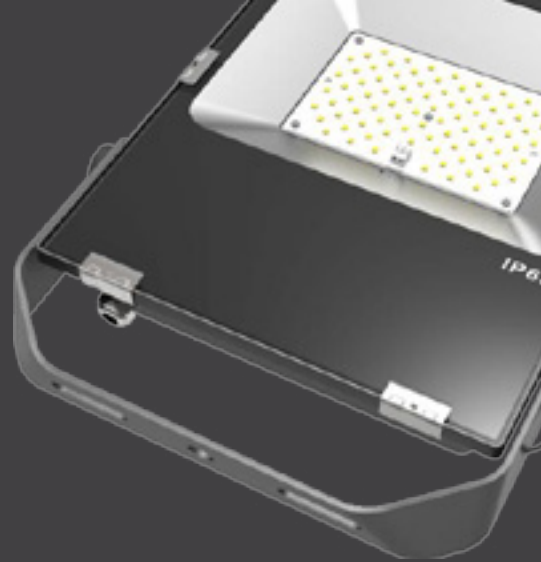
REGUS 80W

- Osram LED engine
- IP65 rated
- Aluminium body
- Environmentally Friendly - No mercury or lead enters the environment
- No RF and electronic magnetic interference
- Over 50,000 hours life span
- Beam Angle 120°



The Regus 80W is constructed from an aluminium moulding with the LED chips displayed in a standard array pattern. This creates optimum passive heatsinking as air travels over the fins on the heatsink.

The Regus has an IP65 rating.



Regus 80 W

Power	80 W
Dimensions	245 x 354.5 x 55mm
Weight	4.2 kg
Installation	Bracket mounted
Voltage	85-277Vac 50/60Hz

Performance

Exit Lumens (lm)	10,424 lm
Efficiency	129.5 lm/cW
Colour Rendering	Ra>80
Colour Temperature	3000K / 4000K / 5000K
IP Rating	IP65
Operating Temp.	-20°C - 60°C
Longevity	50,000 hours
Warranty	5 Years

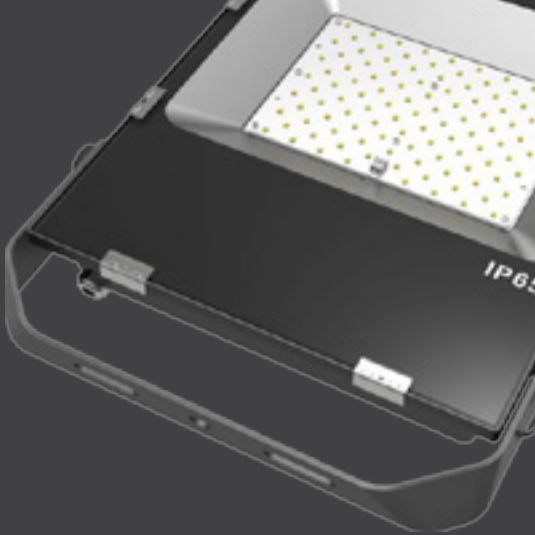
REGUS 100W

- Osram LED engine
- IP65 rated
- Aluminium body
- Environmentally Friendly - No mercury or lead enters the environment
- No RF and electronic magnetic interference
- Over 50,000 hours life span
- Beam Angle 120°



The Regus 100W is constructed from an aluminium moulding with the LED chips displayed in a standard array pattern. This creates optimum passive heatsinking as air travels over the fins on the heatsink.

The Regus has an IP65 rating.

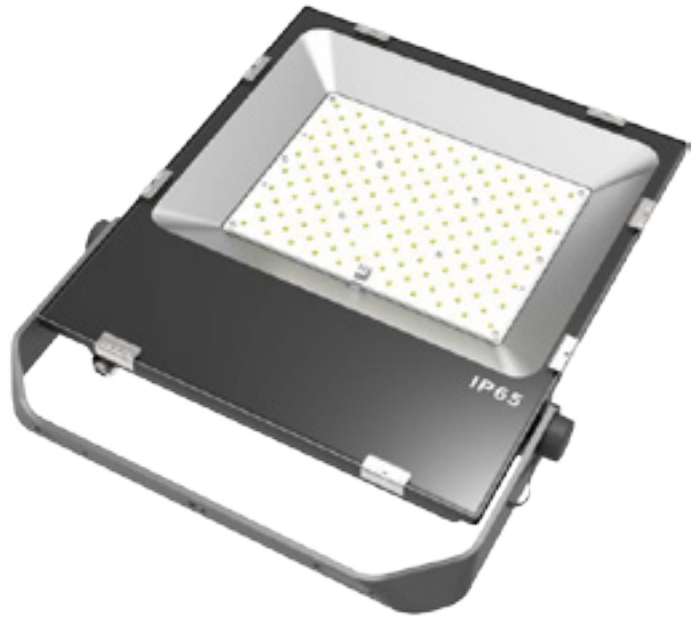


Regus 100 W	
Power	100 W
Dimensions	295 x 403.5 x 60mm
Weight	5.8 kg
Installation	Bracket mounted
Voltage	85-277Vac 50/60Hz

Performance	
Exit Lumens (lm)	13,002 lm
Efficiency	130.0 lm/cW
Colour Rendering	Ra>80
Colour Temperature	3000K / 4000K / 5000K
IP Rating	IP65
Operating Temp.	-20°C - 60°C
Longevity	50,000 hours
Warranty	5 Years

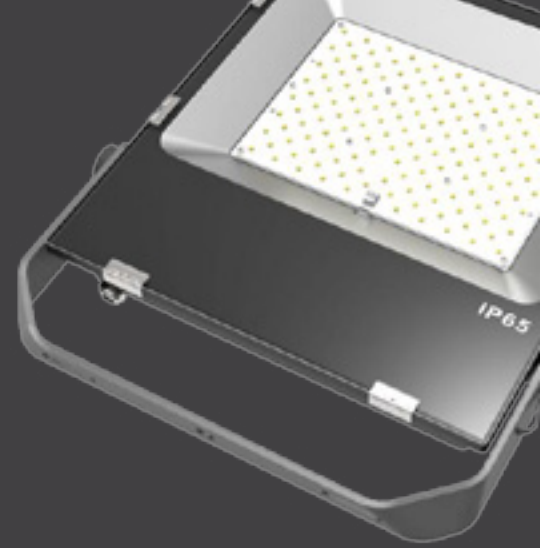
REGUS 150W

- Osram LED engine
- IP65 rated
- Aluminium body
- Environmentally Friendly - No mercury or lead enters the environment
- No RF and electronic magnetic interference
- Over 50,000 hours life span
- Beam Angle 120°



The Regus 150W is constructed from an aluminium moulding with the LED chips displayed in a standard array pattern. This creates optimum passive heatsinking as air travels over the fins on the heatsink.

The Regus has an IP65 rating.

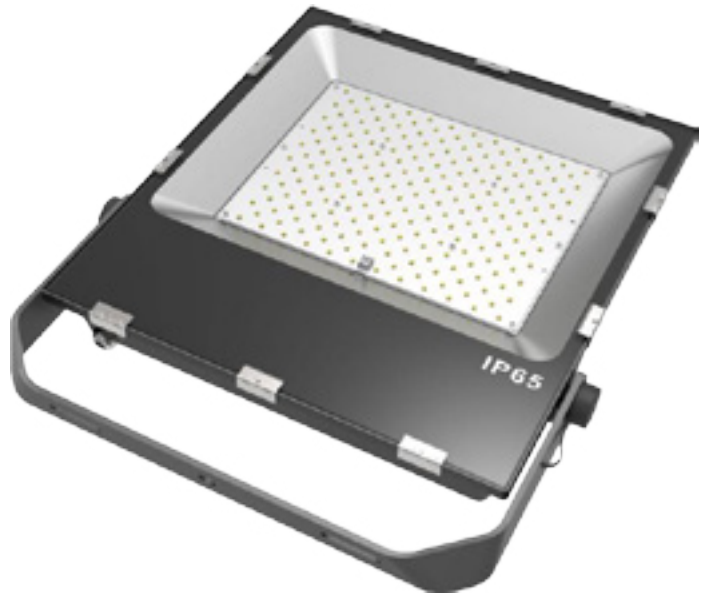


Regus 150 W	
Power	150 W
Dimensions	330 x 430.5 x 60mm
Weight	9.5 kg
Installation	Bracket mounted
Voltage	85-277Vac 50/60Hz

Performance	
Exit Lumens (lm)	19,595 lm
Efficiency	129.8 lm/cW
Colour Rendering	Ra>80
Colour Temperature	3000K / 4000K / 5000K
IP Rating	IP65
Operating Temp.	-20°C - 60°C
Longevity	50,000 hours
Warranty	5 Years

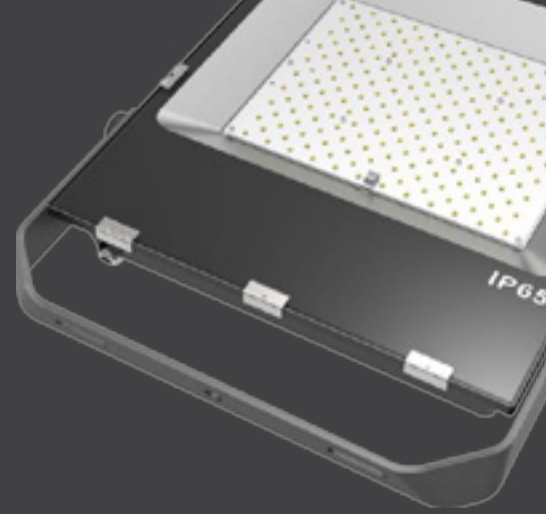
REGUS 200W

- Osram LED engine
- IP65 rated
- Aluminium body
- Environmentally Friendly - No mercury or lead enters the environment
- No RF and electronic magnetic interference
- Over 50,000 hours life span
- Beam Angle 120°



The Regus 200W is constructed from an aluminium moulding with the LED chips displayed in a standard array pattern. This creates optimum passive heatsinking as air travels over the fins on the heatsink.

The Regus has an IP65 rating.



Regus 200 W	
Power	200 W
Dimensions	360 x 470.5 x 60mm
Weight	10.9 kg
Installation	Bracket mounted
Voltage	85-277Vac 50/60Hz

Performance	
Exit Lumens (lm)	26,071 lm
Efficiency	127.5 lm/cW
Colour Rendering	Ra>80
Colour Temperature	3000K / 4000K / 5000K
IP Rating	IP65
Operating Temp.	-20°C - 60°C
Longevity	50,000 hours
Warranty	5 Years

sales@led.co.uk
www.led.co.uk

LED.CO.UK